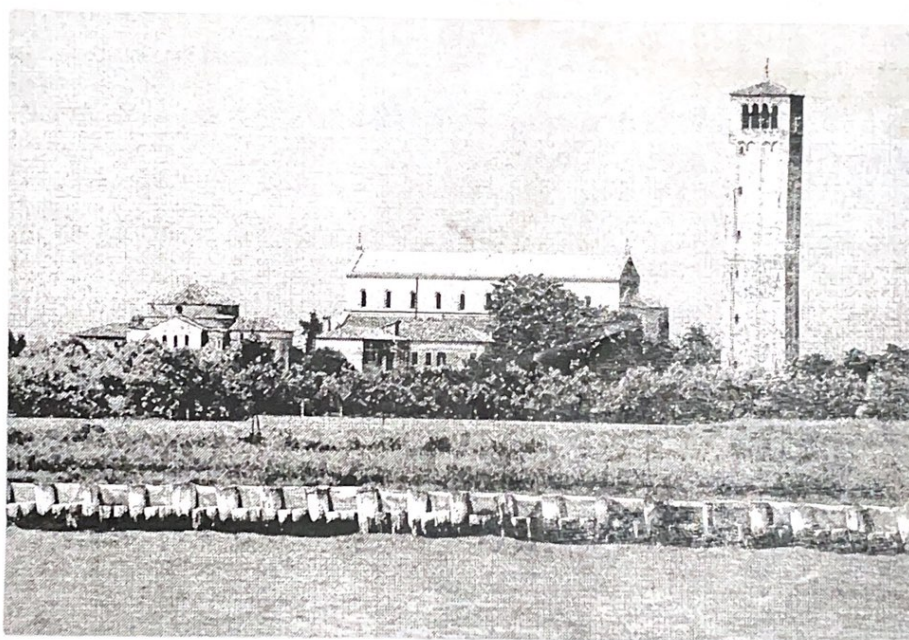


**VIII International Aldington Society
&
IV International Imagism Conference**



VENICE / TORCELLO

June 19-21, 2014

Conference Directors: Daniel Kempton & H. R. Stoneback

June 19

Opening Reception and Poetry Reading (4:00-6:00 p.m.)

Locanda Cipriani, Torcello—Poets reading include:

Valerie Hemingway, Ian MacNiven, Matt Nickel, Emily Mitchell Wallace,
Evan Hulick, Dan Pizappi, Jeff Grieneisen, Michele Reese, Anthony Ozturk,
Mary de Rachewiltz, John Gery, H. R. Stoneback

June 20

Dante Society, Venice

Session 1 (9:00-10:10 a.m.) Session Chair, Daniel Kempton

Bill Lavender (Editor, *Lavender Ink*), "The Value of the Image:

Common Foundations of Poundian Theories of Money and Imagism"

Zuzana Malá (Charles University, Prague), "Pound's Concept of Image and
the Czech Avant-garde in the Twenties"

Courtney Ruffner Grieneisen (State College of Florida), "Pound[ing]

Sanity: Eccentricity, Paradise and Beauty in Pound's *Cantos*"

Emily Mitchell Wallace (Bryn Mawr College), "'The gold thread in the
pattern': Pound's Imagist Masterpiece" (illustrated)

Session 2 (10:20-11:30) Session Chair, H. R. Stoneback

Alice Bailey Cheylan (Université du Sud Toulon-Var), "A Poet's Paradise:

Richard Aldington's *Winter on Port Cros*"

Caterina Ricciardi (Università di Roma Tre), "Richard Aldington

Encounters the Devotional Art of Beato Angelico: Paris 1912"

Anthony Ozturk (Pepperdine University, Lausanne), "Renaissance Vortex:
The Schifanoja Frescoes and the Este at Ferrara"

Daniel Kempton (SUNY New Paltz), "Not Being Aldington"

Session 3 (11:40-12:30) Session Chair, Amanda Capelli

Sarah Lee (Goldsmith College, University of London), "The Imagisme
Brand and Imagist Rivalries"

Michele Reese (University of South Carolina, Sumter), "Pound, *Poetry*, and
Present Day"

Ian MacNiven (SUNY Maritime), "New Directions in Imagism"

Lunch (12:30-1:30 p.m.)

Dante Society

Session 4 (1:30-2:40) Session Chair, Daniel Pizappi

Jeff Grieneisen (State College of Florida), "Hemingway: New Naturalist in the Modern Era"

Valerie Hemingway (Independent Scholar), "Ernest Hemingway's *Across the River and Into the Trees*: An Exploration of the Influence of Ezra Pound and the Legacy of the Imagism Movement in the Text of Hemingway's Venetian Novel (1950)"

Roy Verspoor (SUNY New Paltz), "Ornament and Understatement: an Imagist Review of Dialogue in Hemingway's *The Sun Also Rises*"

Matthew Nickel (Misericordia University), "'Thy quiet house': Images of Light and Veneration in Ezra Pound and Ernest Hemingway"

Session 5 (2:50-4:00) Session Chair, Matt Nickel

Amanda M. Capelli (University of Louisiana-Lafayette), "'The Industrious Worm': Stages of Self in H.D.'s *The Walls Do Not Fall*"

Evan Hulick (SUNY New Paltz), "'Caliban Casts out Ariel': Imagism, Pound, and *The Tempest*"

Daniel J. Pizappi (SUNY New Paltz), "'We cannot live in the houses of other men': A Critical Reappraisal of Skipwith Cannell"

James Wright (SUNY New Paltz), "Opening the Light: Japanese Poetry as the Language of Imagism"

Session 6 (4:10-5:00) Session Chair, Allen Josephs

H. R. Stoneback (SUNY New Paltz), "Across the River and Into Kilmer's *Trees*: Or, A Venetian Poundpourri—*Stitch & Stern*, Aldington's *Casanova*, Goethe's Venetian Epigrams, and Hemingway's Imagist *Torcello*"

Jane Eblen Keller (University of Baltimore), "Elizabeth Madox Roberts's Imagist Dream of Italy"

John R. O. Gery (University of New Orleans), "'In the Forest of Marble': Pound as an American in Venice"

June 21

Walking Tour of Pound's Venice with John Gery (10:00 a.m.)
Accademia Bridge, Venice

Closing Lunch (12:30-2:30 p.m.)
Antica Locanda Montin

Visit to Pound's Grave

San Michele excursion departing from Locanda Montin after lunch

Directions:

Locanda Cipriani: Piazza Santa Fosca, 29, Torcello

For conferees staying on Torcello, on site; for conferees staying on Burano, a 5-minute cross-channel ferry ride—*but check the schedule when you arrive in Burano and make sure you catch the right boat*; for conferees staying in Venice—from your most convenient vaporetto stop, check the optional routes, lines, schedules for the long boat trip to Torcello. From the Torcello boat stop, it is a short walk on the island's only "street"—follow the "island path," the lane along the narrow canal toward the Campanile. You cannot miss the Locanda Cipriani in the "village" center, adjacent to the Cathedral and Campanile.

Dante Society: S. Elena 3 Campo della Chiesa

Boatstop SANT'ELENA. Take any n.1 vaporetto to S. Elena (coming either from San Marco or Lido). N. 1 starts at Piazzale Roma. Or take 4.1 or 4.2 from Fondamente Nuove, Piazzale Roma, Giudecca, etc.

At SANT'ELENA, follow the yellow signs on your right (they say: IAEV, NOVA GORICA etc.) and walk to Hotel S. Elena. In front of the hotel, turn right and you will see a bridge, a stadium, and a church. Walk over the bridge, past the stadium (on your left), to the church. In front of the church, turn left. The second gate is the Dante Society.

Accademia Bridge

Meet at Accademia Vaporetto stop

Antica Locanda Montin: Fondamenta di Borgo, 1147 Dorsoduro

The Conference Directors thank Rosella Mamoli Zorzi for assistance with on-site arrangements and Matthew Nickel for design and production of the printed program.

