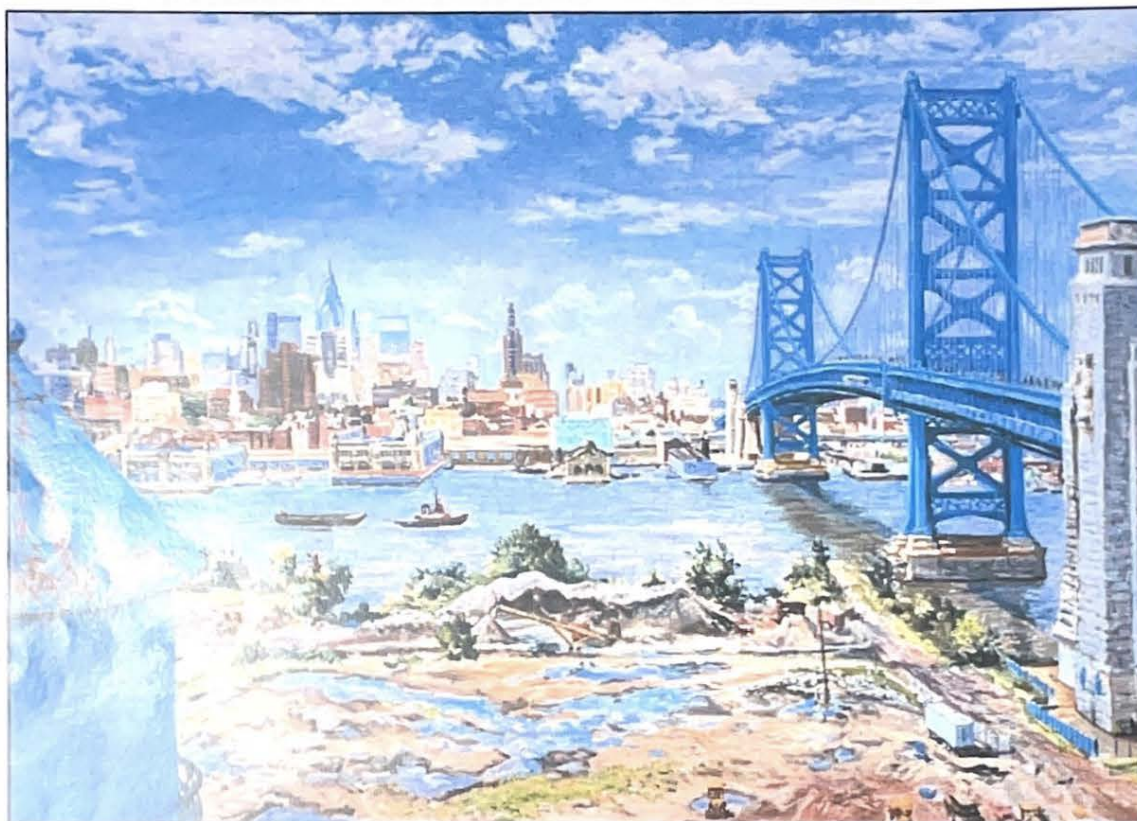


IX INTERNATIONAL ALDINGTON SOCIETY & V INTERNATIONAL IMAGISM CONFERENCE



June 30 – July 2, 2016

PHILADELPHIA, PENNSYLVANIA

CENTER CITY

THE FRANKLIN INN CLUB & THE WELLS FARGO BUILDING

*And the Franklin Inn club...
and young fellows go out to the colonies
but go on paying their dues
—Ezra Pound, Canto LXXX*

“Making Pacts: Before & After Imagism”

*I make a pact with you, Walt Whitman—
I have detested you long enough.
—Ezra Pound, “A Pact”*

**IX INTERNATIONAL ALDINGTON SOCIETY &
V INTERNATIONAL IMAGISM CONFERENCE**

June 30 – July 2, 2016

PHILADELPHIA, PENNSYLVANIA

Conference Co-Directors: Matthew Nickel & H. R. Stoneback

THURSDAY, JUNE 30

Franklin Inn Club (205 S. Camac Street)

- 5 – 5:45** **Opening Reception** at the Franklin Inn Club
- 5:45 – 6:30** **Keynote: Emily Mitchell Wallace** (Bryn Mawr College): Euripides' "*the image that fell from the sky*" and "*songs of magic*": Philadelphia Imagists— Hilda Doolittle, Ezra Pound, William Carlos Williams (Illustrated)
- 6:30 – 8:00** **Dinner with Poetry**

FRIDAY, JULY 1

The Wells Fargo Building (123 South Broad Street)

9:30 – 10:40 AM *Session Chair: Matthew Nickel*

Valerie Hemingway (Independent Scholar): Amygism/Imagism: Richard Aldington and Amy Lowell
Jeff Grieneisen (State College of Florida): Hemingway and Imagism: "Fathers and Sons"
Courtney Ruffner (State College of Florida): Hemingway and Imagism: "Cat in the Rain"
John Beall (Collegiate School): Imagism, Pound, and Hemingway's *in our time*

10:50 AM – 12:00 PM *Session Chair: Daniel Kempton*

Matthew Nickel (Misericordia University): "L'affaire de quinze jours": World War I, Imagism, Hemingway & Echenoz
David Ewick (Tokyo Woman's Christian University): Penultimate Poetry: Aldington, Pound, and the Art of Japan
Chris Paolini (SUNY-New Paltz): "The *Image* Abideth For Ever": Robert Penn Warren's Pact with Ezra Pound
Gregory Bruno (SUNY-New Paltz): Translating Rhythm and Phrase: Imagism & Pound's Troubadour Heritage

~~~Catered Lunch Served On-Site~~~



**12:30 – 1:25 PM**

*Session Chair: Chris Paolini*

**Daniel Kempton** (SUNY-New Paltz): The Question of "Allusiveness" and Canto 39  
**Evan Hulick** (SUNY-New Paltz): "The sunlight glitters . . . Like the church:" The Natural and Supernatural World of Pound and Hemingway  
**John Gery** (University of New Orleans): "Sententious, *Dégagé*": Early Pound and Humor

**1:30 – 2:40 PM**

*Session Chair: Vicky Prashad*

**Josephine Reece** (Harvard University): Re-membering H.D.'s *Sea Garden*  
**John Allaster** (McGill University): Imagist Versions of Pastoral  
**Robert Fillman** (Lehigh University): "A solemn, tortured shadow in the air": Helene Johnson's Imagist Protest Poetry  
**Jane Eblen Keller** (University of Baltimore): A Barker with Fangs: Elizabeth Madox Roberts on Ezra Pound (With Asides on Richard Aldington)

**2:50 – 4:00 PM**

*Session Chair: Gregory Bruno*

**Michele Reese** (USC Sumter): William Carlos Williams' Prose Imagism in *Spring and All*  
**Roy Verspoor** (SUNY-New Paltz): "More power to yr. elbow": William Carlos Williams, Imagism, and *A Season in Hell*  
**Vicky Prashad** (SUNY-New Paltz): "The measure of the spiritual chaos within": Emily Dickinson as Imagist  
**Jessica Nickel** (Misericordia University): With H. R. Stoneback in Camden: Imagism & the *dulcimer*

**4:10 – 5:05 PM**

*Session Chair: Jessica Nickel*

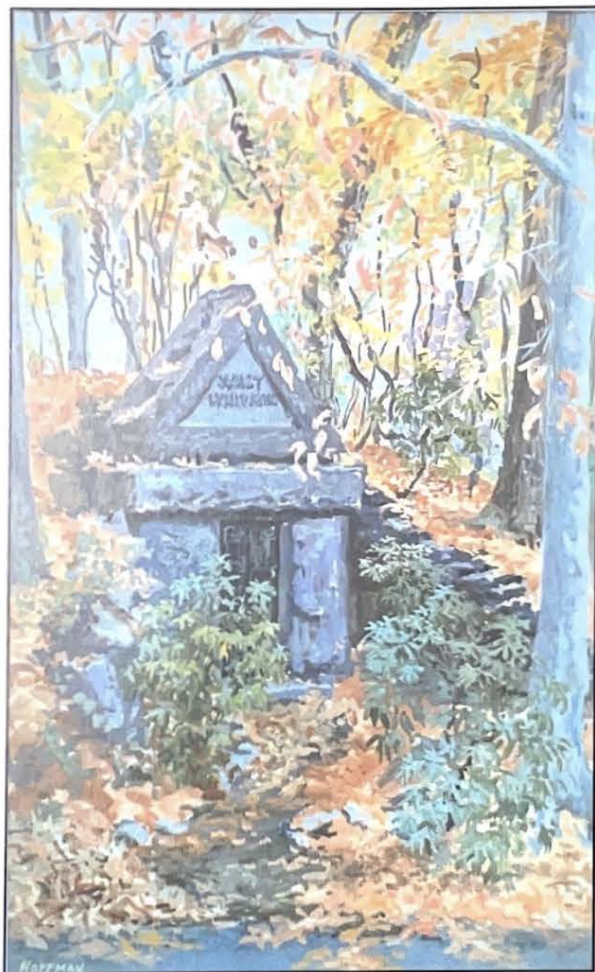
**Linda P. Miller** (Penn State Abington): Hemingway and Imagism: *In Our Time*  
**Richard Davison** (University of Delaware): Performing Imagism  
**H. R. Stoneback** (SUNY-New Paltz): Redeeming Old Pacts: With Walt Whitman in Camden

## **SATURDAY, JULY 2**

**c. 9 AM – 1 PM** Tour and Poetry Reading at Walt Whitman House in Camden. Ferry across the Delaware on Whitman's favorite ferry route. (He sometimes crossed and recrossed all day just for the pleasure of cruising the Delaware River.) The boat schedule now seems to be set, with the first ferry leaving the Philadelphia dock at 10 AM. This would mean, for most conferees, we should be checked out of our hotels by 9 AM (luggage stored at front desk until return) and share a taxi ordered for 9:10 latest to the "Riverlink Ferry Landing" (next to the Independence Seaport Museum). It is a long two-mile (40-minute) walk from our Broad Street lodgings to the ferry. If you miss the 10 AM ferry, you will miss the Whitman House tour and program. On the Camden side, it

will be about a 10-minute walk from the ferry landing to the Whitman House (330 Mickle—Martin Luther King—Blvd); the curator will lead groups of 10 for the house-tour while the rest of us read poetry (Whitman-related poems) in the garden. After the program, the group will walk back (c.10 minutes) to the ferry via a quick stop (lunch on your own) at the historic RCA Building either at The Victor's Pub or the Market Gourmet next door (sandwiches from \$5). Time and the duration of the Whitman House program will dictate whether we return to Philly on the 12:30 or 1:30 ferry. The following link provides information about the ferry landings, ticketing, etc.

<http://www.delawareriverwaterfront.com/places/riverlink-ferry/directions>



*The program illustrations are from the paintings "View of Philadelphia with the Ben Franklin Bridge" and "Walt Whitman's Tomb, Harleigh Cemetery" by the renowned artist William Hoffman: "Like the British and American imagist poets of the early twentieth century, Hoffman's goal is to communicate a sense of place by depicting concrete images very directly and simply" (Roberta K. Tarbell, Camden: Historical Impressions—Paintings by William M. Hoffman, Jr., 5).*